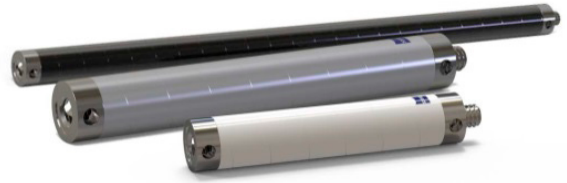




# ZEISS REACH CFX



New carbon extension maximizing the performance of coordinate measuring machines and achieving the higher throughput for measurements.

### Light weight

Stylus system can be freely configured without worrying about the probe weight limit.  
Workpieces of intricate shapes can be measured in a short time by minimizing the stylus change frequency.

### Thermally stable

With almost no thermal expansion or contraction achieved by the proprietary carbon technology of ZEISS, highly accurate measurement results can be obtained regardless of temperature environment.

### Statically stiff

As the deflection in measurement is minimized, high-speed scanning measurement can be performed without affecting the accuracy.

Material	Weight	Expansion	Deflection
ZEISS REACH CFX5			
ZEISS REACH CFX3*			
ZEISS REACH CFX1			
Aluminium			
Titanium			

\*CFX 3 is a new name of ThermoFit® extensions.

M5	Outline Shape	Model	Dimensions (mm)							Weight (g)	
			DK	L	DG	ML	MLE	DS	DSE		B
Extension (ZEISS REACH CFX 5)		626107-1040-200		40	11						8
		626107-1050-200		50	11						8
		626107-1060-200		60	11						9
		626107-1075-200		70	11						10
		626107-1080-200		80	11						10
		626107-1090-200		90	11						11
		626107-1100-200		100	11						12
		626107-1120-200		120	11						14
		626107-1150-200		150	11						15
		626107-1200-200		200	11						18
		626107-1250-200		250	11						22
		626107-2040-200		40	20						25
		626107-2050-200		50	20						26
		626107-2060-200		60	20						27
		626107-2075-200		75	20						30
		626107-2080-200		80	20						30
		626107-2090-200		90	20						31
		626107-2100-200		100	20						32
		626107-2120-200		120	20						34
		626107-2150-200		150	20						38
		626107-2200-200		200	20						46
		626107-2250-200		250	20						52
		626107-2300-200		300	20						58
		626107-2400-200		400	20						71

M5	Outline Shape	Model	Dimensions (mm)							Weight (g)	
			DK	L	DG	ML	MLE	DS	DSE		B
Extension (ZEISS REACH CFX 3)		626107-1040-100		40	11						9
		626107-1050-100		50	11						10
		626107-1060-100		60	11						11
		626107-1075-100		75	11						11
		626107-1080-100		80	11						12
		626107-1090-100		90	11						13
		626107-1100-100		100	11						14
		626107-1120-100		120	11						15
		626107-1150-100		150	11						17
		626107-1200-100		200	11						21
		626107-1250-100		250	11						24
		626107-2040-100		40	20						26
		626107-2050-100		50	20						28
		626107-2060-100		60	20						29
		626107-2075-100		75	20						31
		626107-2080-100		80	20						32
		626107-2090-100		90	20						33
		626107-2100-100		100	20						34
		626107-2120-100		120	20						37
		626107-2150-100		150	20						41
		626107-2200-100		200	20						48
		626107-2250-100		250	20						55
		626107-2300-100		300	20						62
		626107-2400-100		400	20						78
Extension (ZEISS REACH CFX 1)		626107-1040-300		40	11					8	
		626107-1050-300		50	11					8	
		626107-1060-300		60	11					9	
		626107-1075-300		75	11					10	
		626107-1080-300		80	11					10	
		626107-1090-300		90	11					11	
		626107-1100-300		100	11					12	
		626107-1120-300		120	11					14	
		626107-1150-300		150	11					15	
		626107-1200-300		200	11					18	
		626107-1250-300		250	11					22	
		626107-2040-300		40	20					25	
		626107-2050-300		50	20					26	
		626107-2060-300		60	20					27	
		626107-2075-300		75	20					30	
		626107-2080-300		80	20					30	
		626107-2090-300		90	20					31	
		626107-2100-300		100	20					32	
		626107-2120-300		120	20					34	
		626107-2150-300		150	20					38	
		626107-2200-300		200	20					46	
		626107-2250-300		250	20					52	
		626107-2300-300		300	20					58	
		626107-2400-300		400	20					71	



## OmniFix<sup>®</sup> Kits

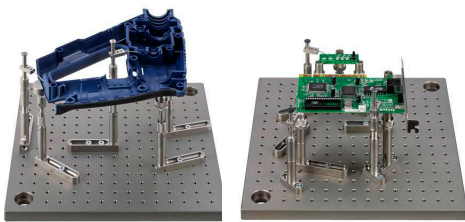
NEW

OmniFix<sup>®</sup> Kits are designed to meet diverse needs ranging from small machined parts to aircraft parts, large vehicle seat metal and plastic body components. Each kit is designed to be modular and the scalability.



### Usage examples of kit for small parts

- OmniFix<sup>®</sup> Kit - M4, 240 × 240 mm
- OmniFix<sup>®</sup> Kit Lite - M4, 240 × 240 mm
- OmniFix<sup>®</sup> Kit - M6, 240 × 240 mm
- OmniFix<sup>®</sup> Kit Lite - M6, 240 × 240 mm

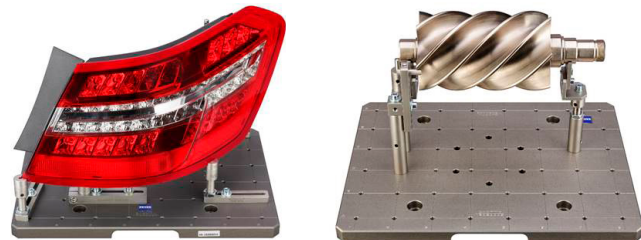


- OmniFix<sup>®</sup> Kit - Jointed arm, 500 × 400 mm



### Usage examples of kit for midium-sized parts

- OmniFix<sup>®</sup> Kit - M6, 500 × 500 mm
- OmniFix<sup>®</sup> Kit Lite - M6, 500 × 500 mm

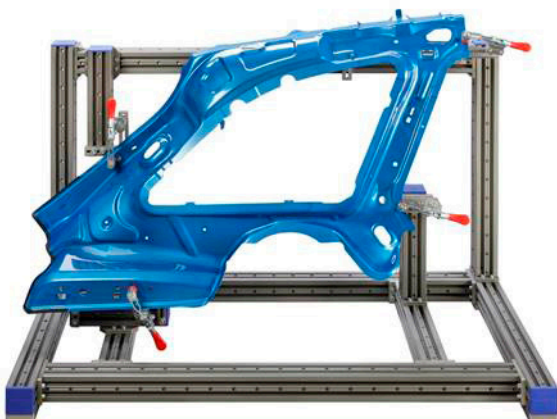


- OmniFix<sup>®</sup> Kit - Jointed arm, 1000 × 1000 mm



### Usage examples of kit for large parts

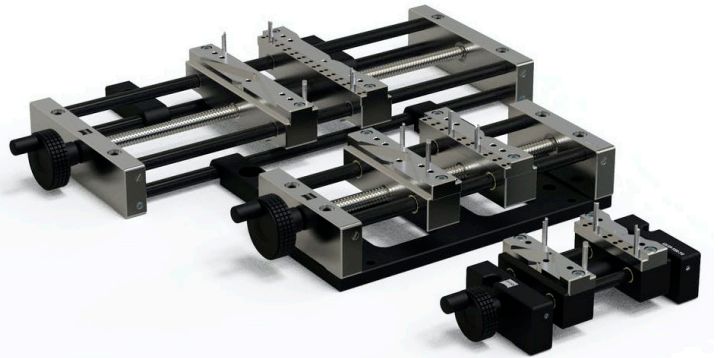
- OmniFix<sup>®</sup> Kit - Profile, 1800 × 600 mm





# OmniFix<sup>®</sup> Vise **NEW**

ZEISS OmniFix<sup>®</sup> clamping fixtures are designed for the most varied workpiece geometries, eliminating the need for costly, customized solutions.



## ▼ Movie is available for introducing how to use OmniFix<sup>®</sup> Vises

MOVIE



OmniFix<sup>®</sup> Vises are able to be connected to ZEISS pallets with M6 threads directly, and clamped onto the machine table with an aluminum plate or brackets (included with some vises).

### Lightweight and stable

A workpiece must be securely positioned on the fixture so that it is not deformed or moved. ZEISS OmniFix<sup>®</sup> vises are lightweight but extremely stable – this guarantees reliable measurements.

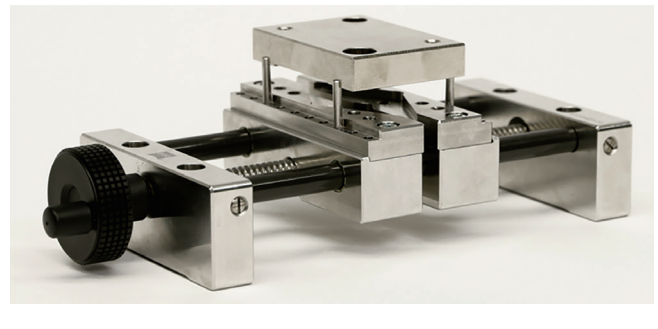
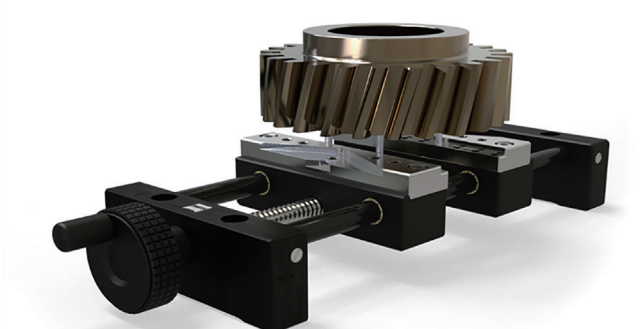
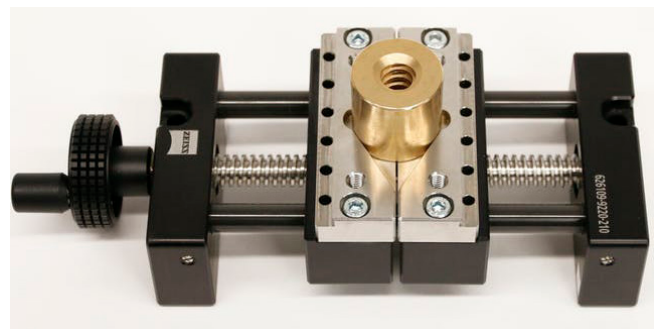
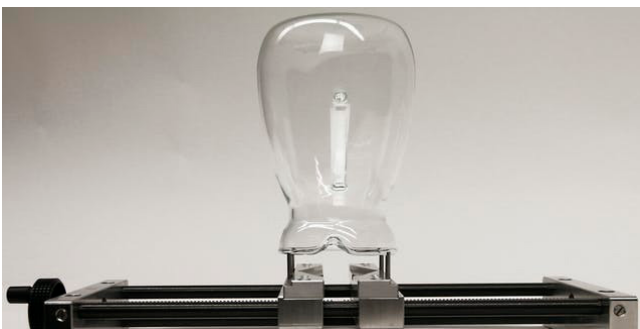
### Optimum accessibility

The interchangeable jaws enable the vises to accommodate a wide range of workpiece geometries. The exchangeable pins in the interchangeable jaws ensure even greater flexibility. This provides optimum access from all sides.

### Center clamping

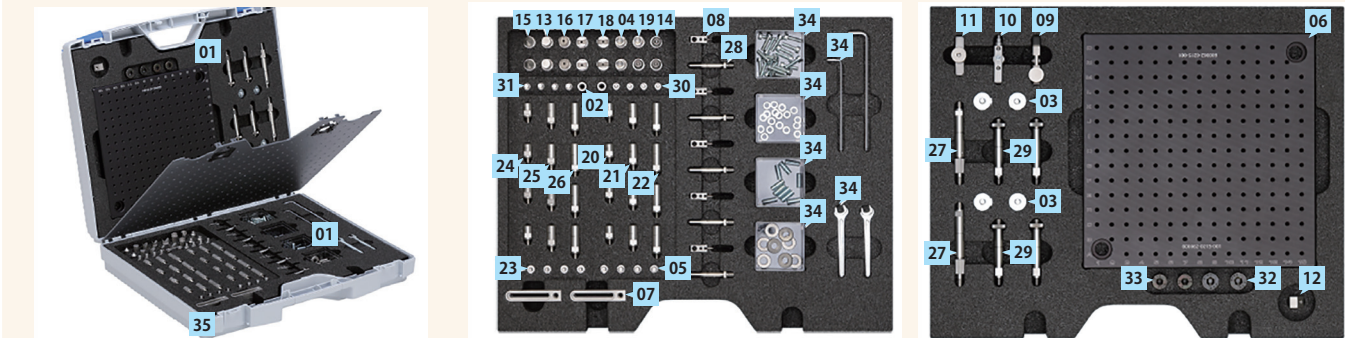
ZEISS OmniFix<sup>®</sup> vises feature center clamping. This way, rotationally symmetrical components can be fixtured at the same midpoint. This allows programs to parameterize and thus makes measuring different component versions a breeze. A ZEISS rotary table can also be used to center the components when fixturing.

## Usage examples



**OmniFix® Kit** Kits for small parts

OmniFix® Kit – M4, 240x240 mm model : 600062-0351-027



No	Qty	Model	Detailed	No	Qty	Model	Detailed
1	1	600062-0351-027	OmniFlx Kit - M4, 240x240 mm	19	1	600062-0215-005	Part Support D10 M8x0.5 - Corner Support
2	2	600062-0210-131	Column D10 M6 FF - L15	20	4	600062-0215-022	Column D10 M4 MF - L15
3	4	600062-0001-245	Part Fastening D20 M6 - Flat Magnet	21	4	600062-0215-023	Column D10 M4 MF - L22.5
4	2	600062-0351-009	Part Support D10 M8x0.5 - Longitudinal	22	4	600062-0215-024	Column D10 M4 MF - L30
5	4	600062-0351-030	Adapter Column D10 M6 - M4 MF - L15	23	4	600062-0215-012	Adapter Column D10 M4 - M6 MF - L15
6	1	600062-0215-001	Gridplate 15x240x240, Grid 15x15 mm - M4	24	4	600062-0215-025	Column D10 M6 MF - L15
7	6	600062-0215-002	Bracket 12x10x60 - M6	25	4	600062-0215-026	Column D10 M6 MF - L22, 5
8	5	600062-0215-013	Part Fastening D10 D5 - Wire Clip	26	4	600062-0215-027	Column D10 M6 MF - L30
9	1	600062-0215-015	Part Fastening D10 M6 - Pliers Clamp	27	2	600062-0215-014	Column D10 M6 - Adjustable
10	1	600062-0215-016	Part Fastening D10 M6 - Parallel Clamp	28	5	600062-0215-010	Part Fastening D10 - Column for Clip, L=40 mm
11	1	600062-0215-017	Connecting Elements D10 M6 - Hinge L40	29	4	600062-0215-004	Column D10 M6/M8x0.5 - L50
12	1	600062-0215-018	Connecting Elements D10 M4 - Angle 45°	30	4	600062-0215-019	Thread Adapter M4 - M8x0.5
13	2	600062-0215-009	Part Support D10 M8x0.5 - Flat Support	31	4	600062-0215-020	Thread Adapter M6 - M8x0.5
14	3	600062-0215-006	Part Support D10 M8x0.5 - Spherical	32	2	-	Hex. Sock. M12x20 DIN 7984 8.8 ZNS with low head
15	2	600062-0215-008	Part Support D10 M8x0.5 - Cone Support	33	2	-	Hex. Sock. M10x20 DIN 7984 8.8 ZNS with low head
16	2	600062-0215-007	Part Support D10 M8x0.5 - Prism D10	34	1	600062-0351-029	OmniFix Kit M4 240x240 Toolkit
17	2	600062-0215-028	Part Support D10 M8x0.5 - Prism D10, narrow	35	1	600062-0215-040	OmniFix Kit M4 240x240 Case
18	2	600062-0215-029	Part Support D10 M8x0.5 - Prism D14, narrow				

OmniFix® Kit Lite – M4, 240x240 mm Model : 600062-0351-026\*1

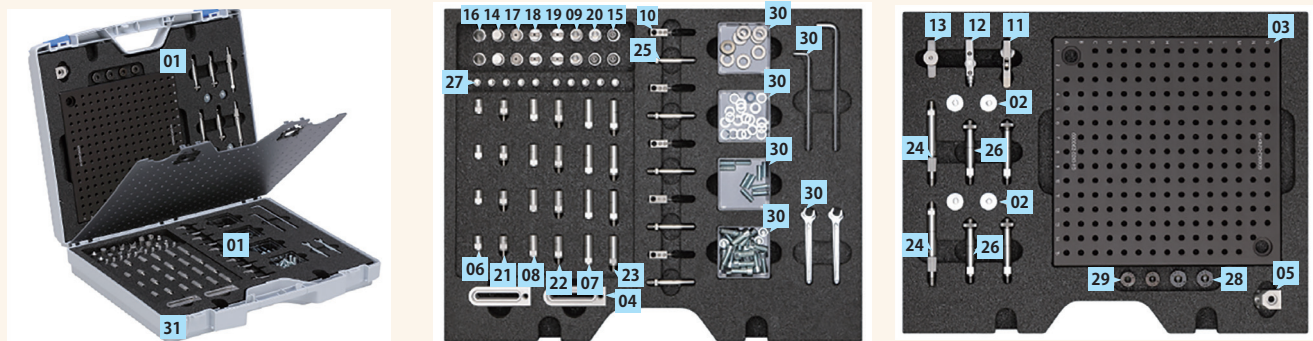


No	Qty	Model	Detailed	No	Qty	Model	Detailed
1	1	600062-0351-026	OmniFix Kit Lite - M4, 240x240mm	11	4	600062-0215-023	Column D10 M4 MF - L22.5
2	2	600062-0351-009	Part Support D10 M8x0.5 - Longitudinal	12	4	600062-0215-024	Column D10 M4 MF - L30
3	4	600062-0351-030	Adapter Column D10 M6 - M4 MF - L15	13	4	600062-0215-012	Adapter Column D10 M4 - M6 MF - L15
4	6	600062-0215-002	Bracket 12x10x60 - M6	14	4	600062-0215-025	Column D10 M6 MF - L15
5	4	600062-0215-013	Part Fastening D10 D5 - WireClip	15	4	600062-0215-026	Column D10 M6 MF - L22.5
6	3	600062-0215-006	Part Support D10 M8x0.5 - Spherical	16	4	600062-0215-010	Part Fastening D10 - Column for Clip, L=40 mm
7	2	600062-0215-008	Part Support D10 M8x0.5 - Cone Support	17	4	600062-0215-019	Thread Adapter M4 - M8x0.5
8	2	600062-0215-029	Part Support D10 M8x0.5 - Prism D14, narrow	18	4	600062-0215-020	Thread Adapter M6 - M8x0,5
9	1	600062-0215-005	Part Support D10 M8x0.5 - Corner Support	19	1	600062-0351-029	OmniFix Kit M4 240x240 Toolkit
10	4	600062-0215-022	Column D10 M4 MF - L15	20	1	600062-0215-039	OmniFix Kit Lite M4 240x240 Case

\*1 This product is not including a gridplate(M4).

## OmniFix® Kit Kits for small parts

OmniFix® Kit – M6, 240x240 mm Model : 600062-0351-023



No	Qty	Model	Detailed	No	Qty	Model	Detailed
1	1	600062-0351-023	OmniFix Kit - M6, 240x240 mm	17	2	600062-0215-007	Part Support D10 M8x0.5 - Prism D10
2	4	600062-0001-245	Part Fastening D20 M6 - Flat Magnet	18	2	600062-0215-028	Part Support D10 M8x0.5 - Prism D10, narrow
3	1	600062-0210-113	Gridplate 15x240x240, Grid 15x15 mm - M6	19	2	600062-0215-029	Part Support D10 M8x0.5 - Prism D14, narrow
4	6	600062-0210-114	Bracket 20x10x64 - M6	20	1	600062-0215-005	Part Support D10 M8x0.5 - Corner Support
5	1	600062-0210-120	Connecting Element D10 M6 - Angle 45°	21	4	600062-0215-025	Column D10 M6 MF - L15
6	4	600062-0210-131	Column D10 M6 FF - L15	22	4	600062-0215-026	Column D10 M6 MF - L22.5
7	4	600062-0351-008	Column D10 M6 FF - L30	23	4	600062-0215-027	Column D10 M6 MF - L30
8	4	600062-0351-007	Column D10 M6 FF - L22.5	24	2	600062-0215-014	Column D10 M6 - Adjustable
9	2	600062-0351-009	Part Support D10 M8x0.5 - Longitudinal	25	5	600062-0215-010	Part Fastening D10 - Column for Cilp, L=40 mm
10	5	600062-0215-013	Part Fastening D10 D5 - Wire Clip	26	4	600062-0215-004	Column D10 M6/M8x0.5 - L50
11	1	600062-0215-015	Part Fastening D10 M6 - Pliers Clamp	27	10	600062-0215-020	Thread Adapter M6 - M8x0.5
12	1	600062-0215-016	Part Fastening D10 M6 - Parallel Clamp	28	2	-	Hex. sock. M12x20 DIN 7984 8.8 ZNS, with low head
13	1	600062-0215-017	Connecting Element D10 M6 - Hinge L40	29	2	-	Hex. sock. M10x20 DIN 7984 8.8 ZNS, with low head
14	2	600062-0215-009	Part Support D10 M8x0.5 - Flat Support	30	1	600062-0351-028	OmniFix Kit M6 240x240 Toolkit
15	3	600062-0215-006	Part Support D10 M8x0.5 - Spherical	31	1	600062-0215-038	OmniFix Kit M6 240x240 Case
16	2	600062-0215-008	Part Support D10 M8x0.5 - Cone Support				

OmniFix® Kit Lite – M6, 240x240 mm Model : 600062-0351-022\*2

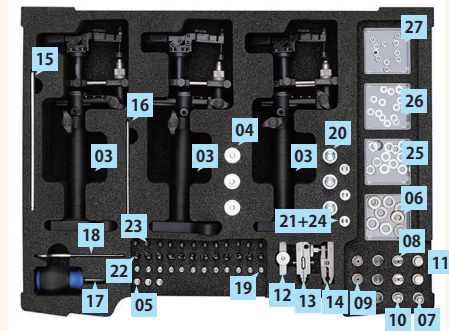


No	Qty	Model	Detailed	No	Qty	Model	Detailed
1	1	600062-0351-022	OmniFix Kit Lite - M6, 240x240 mm	10	2	600062-0215-029	Part Support D10 M8x0.5 - Prism D14, narrow
2	6	600062-0210-114	Bracket 20x10x64 - M6	11	1	600062-0215-005	Part Support D10 M8x0.5 - Corner Support
3	4	600062-0210-131	Column D10 M6 FF - L15	12	4	600062-0215-025	Column D10 M6 MF - L15
4	4	600062-0351-008	Column D10 M6 FF - L30	13	4	600062-0215-026	Column D10 M6 MF - L22.5
5	4	600062-0351-007	Column D10 M6 FF - L22.5	14	4	600062-0215-027	Column D10 M6 MF - L30
6	2	600062-0351-009	Part Support D10 M8x0.5 - Longitudinal	15	4	600062-0215-010	Part Fastening D10 - Column for Clip, L=40 mm
7	4	600062-0215-013	Part Fastening D10 D5 - Wire Clip	16	8	600062-0215-020	Thread Adapter M6 - M8x0.5
8	3	600062-0215-006	Part Support D10 M8x0.5 - Spherical	17	1	600062-0351-028	OmniFix Kit M6 240x240 Toolkit
9	2	600062-0215-008	Part Support D10 M8x0.5 - Cone Support	18	1	600062-0215-037	OmniFix Kit Lite M6 240x240 Case

\*2 This product is not including a gridplate(M6).

OmniFix® Kit Kits for small parts

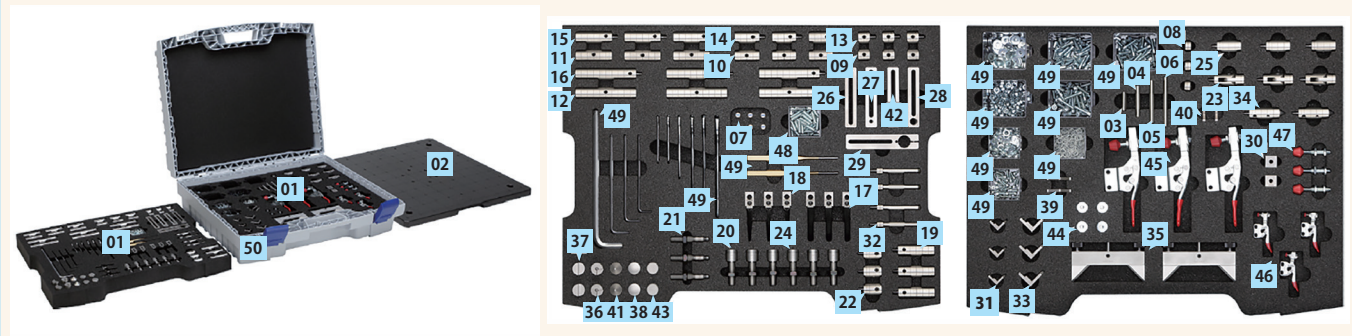
OmniFix® Kit – Jointed arm, 500x400 mm model : 600062-0351-259



No	Qty	Model	Detailed	No	Qty	Model	Detailed
1	1	600062-0001-259	OmniFix Kit Jointed Arm, 500x400 mm	15	1	-	Allen-Wrench AF 5 mm
2	1	600062-0210-565	OmniFix Kit Jointed Arm 500x400 Case	16	1	-	Allen-Wrench AF 3 mm
3	3	600062-0000-228	Gelenkarm Einheit 025, Gridplate 50, short version	17	1	-	Flat Head Screwdriver - short
4	3	600062-0001-245	Part Fastening D20 M6 - Flat Magnet	18	1	-	Open-end wrench AF 10 mm
5	3	600062-0215-020	Thread Adapter M6 - M8x0.5	19	12	600062-0210-024	Thread Adapter - M6x20, centrally carved
6	3	600062-0000-213	Part Support D10 M8x0.5 - Knurled Nut	20	3	-	Socket Head Screw M12x25 DIN 7984 ZNS
7	2	600062-0215-005	Part Support D10 M8x0.5 - Corner Support	21	3	-	Socket Head Screw M8x25 DIN 912 ZNS, 8.8
8	2	600062-0215-028	Part Support D10 M8x0.5 - Prism D10, narrow	22	12	-	Socket Head Screw M6x20 DIN 912 ZNS, 8.8
9	2	600062-0215-007	Part Support D10 M8x0.5 - Prism D10	23	12	-	Socket Head Screw M4x20 DIN 912 ZNS, 8.8
10	3	600062-0215-008	Part Support D10 M8x0.5 - Cone Support	24	3	-	Washer D=8.4 DIN 125 ST ZNS
11	2	600062-0215-009	Part Support D10 M8x0.5 - Flat Support	25	12	-	Washer D=6.4 DIN 125 ST ZNS
12	1	600062-0215-017	Connecting Element D10 M6 - Hinge L40	26	12	-	Washer D=4.3 DIN 125 ST ZNS
13	1	600062-0215-016	Part Fastening D10 M6 - Paralel Clamp	27	10	-	Hexagon nut M4 DIN 439 ZNS, low version
14	1	600062-0215-015	Part Fastening D10 M6 - Pliers Clamp				

# OmniFix® Kit Kits for midium-sized parts

OmniFix® Kit – M6, 500x500 mm model : 600062-0351-006

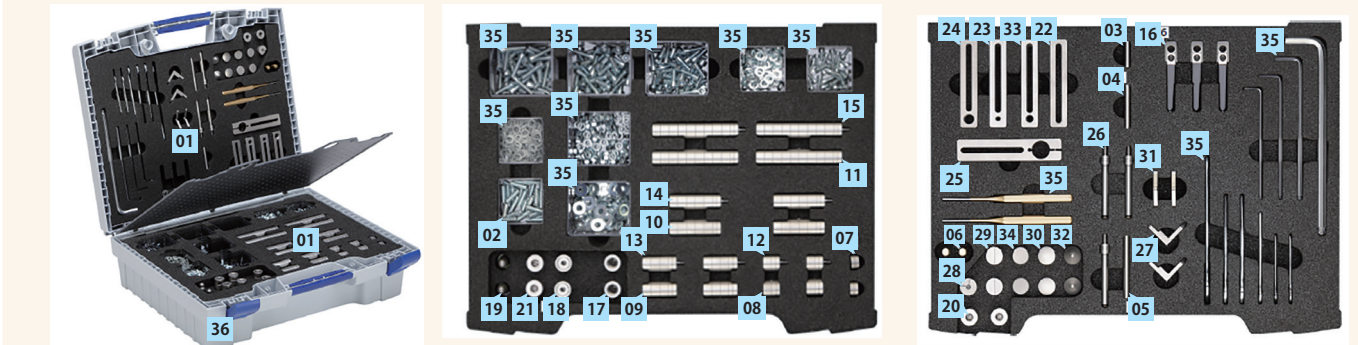


No	Qty	Model	Detailed	No	Qty	Model	Detailed
1	1	600062-0351-006	OmniFix Kit - M6, 500x500mm	26	4	600062-0210-091	Bracket 20x10x100 - Slot
2	1	600062-0117-000	Gridplate 500x500x20 black anodized 50x50 mm M6 Grid	27	4	600062-0210-092	Bracket 20x10x100 - M6
3	3	600062-0210-025	Part Support - Cylindrical Pin D8 L30	28	4	600062-0210-093	Bracket 20x10x100 - M12x1
4	3	600062-0210-026	Part Support - Cylindrical Pin D8 L50	29	2	600062-0210-094	Bracket 25x15x120 - D20
5	3	600062-0210-027	Part Support - Cylindrical Pin D8 L70	30	2	600062-0210-095	Connecting Elements D20 M6 - Cube
6	3	600062-0210-028	Part Support - Cylindrical Pin D8 L80	31	3	600062-0210-096	Connecting Elements D20 M6, Mounting Bracket
7	6	600062-0210-062	Part Fastening D20 M6 - Bar Magnet	32	4	600062-0210-097	Part Fastening D20, Column for Clip L68
8	3	600062-0210-067	Column D20 M6 FF - L10	33	3	600062-0210-098	Connecting Elements D20 M6, Mounting Bracket
9	3	600062-0210-068	Column D20 M6 FF - L20	34	2	600062-0210-099	Part Support D20 M6, Spring suspended Cone
10	3	600062-0210-069	Column D20 M6 FF - L40	35	2	600062-0210-100	Part Support D20 D8 - Universal Prism
11	3	600062-0210-070	Column D20 M6 FF - L60	36	2	600062-0210-101	Part Support D20 D8 - Corner Support
12	3	600062-0210-071	Column D20 M6 FF - L100	37	2	600062-0210-102	Part Support D20 D8 - Longitudinal
13	3	600062-0210-073	Column D20 M6 MF - L20	38	2	600062-0210-103	Part Support D20 D8 - Spherical Support
14	3	600062-0210-074	Column D20 M6 MF - L40	39	2	600062-0210-105	Part Support D20 - Prism 120° large
15	3	600062-0210-075	Column D20 M6 MF - L60	40	2	600062-0210-106	Part Support D20 - Prism 90° small
16	3	600062-0210-076	Column D20 M6 MF - L100	41	2	600062-0210-108	Part Support D20 D8 - Cone Support
17	3	600062-0210-077	Part Fastening D20 D8 - Spring Clip, standard	42	4	600062-0210-111	Bracket 20x10x100 - Cross Bore D8
18	3	600062-0210-078	Part Fastening D20 D8 - Spring Clip, narrow	43	2	600062-0210-112	Part Support D20 D8 - Flat Support
19	3	600062-0210-084	Adapter Column D20 M6 - M12x1 MF - L60	44	4	600062-0001-245	Part Fastening D20 M6 - Flat Magnet
20	3	600062-0210-085	Adapter Column D20 M12x1 - M6 MF, adjustable	45	3	600062-0210-053	Part Fastening - Toggle clamp, M6
21	3	600062-0210-086	Part Support D20 M12x1 Spherical Support, adjustable	46	3	600062-0210-054	Part Fastening - Toggle clamp, M4
22	3	600062-0210-087	Adapter Column D20 M6 - D8 MF - L30	47	3	600062-0210-057	Part Fastening - Pressure spindle M8x60
23	3	600062-0210-088	Connecting Elements D20 M6 - Hinge L50	48	50	600062-0210-024	Thread Adapter - M6x20, centrally carved
24	3	600062-0210-089	Adapter Column D20 M12x1 - D8 MF, adjustable	49	1	600062-0210-064	OmniFix Kit M6 500x500 Toolkit
25	3	600062-0210-090	Adapter Column D20 M6 - M8x1 - L40	50	1	600062-0125-002	OmniFix Kit Lite M6 500x500 Case



**OmniFix® Kit** Kits for midium-sized parts

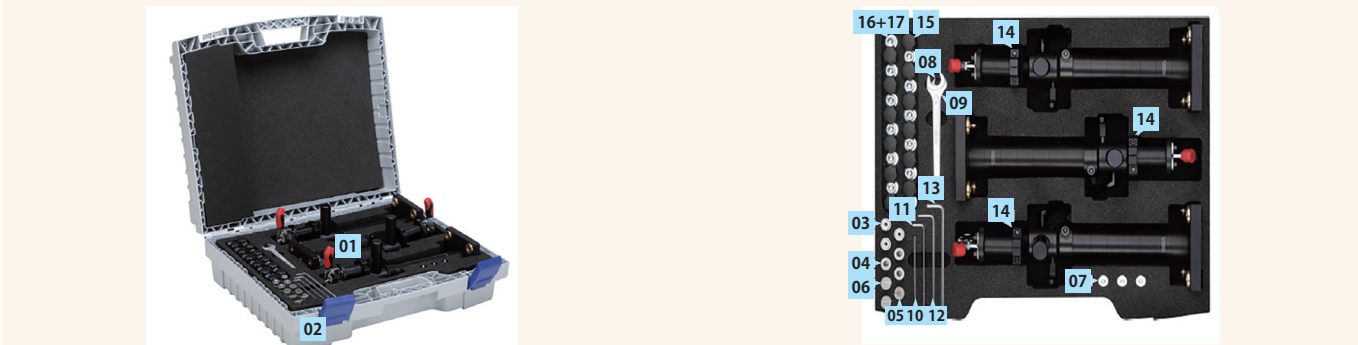
OmniFix® Kit Lite – M6, 500x500 mm Model : 600062-0351-005\*



No	Qty	Model	Detailed	No	Qty	Model	Detailed
1	1	600062-0351-005	OmniFix Kit Lite - M6, 500x500 mm	19	2	600062-0210-086	Part Support D20 M12x1 Spherical Support, adjustable
2	30	600062-0210-024	Thread Adapter - M6x20, centrally carved	20	2	600062-0210-087	Adapter Column D20 M6 - D8 MF - L30
3	2	600062-0210-025	Part Support - Cylindrical Pin D8 L30	21	2	600062-0210-089	Adapter Column D20 M12x1 - D8 MF, adjustable
4	2	600062-0210-026	Part Support - Cylindrical Pin D8 L50	22	2	600062-0210-091	Bracket 20x10x100 - Slot
5	2	600062-0210-027	Part Support - Cylindrical Pin D8 L70	23	4	600062-0210-092	Bracket 20x10x100 - M6
6	4	600062-0210-062	Part Fastening D20 M6 - Bar Magnet	24	2	600062-0210-093	Bracket 20x10x100 - M12x1
7	2	600062-0210-067	Column D20 M6 FF - L10	25	2	600062-0210-094	Bracket 25x15x120 - D20
8	2	600062-0210-068	Column D20 M6 FF - L20	26	3	600062-0210-097	Part Fastening D20, Column for Clip L68
9	2	600062-0210-069	Column D20 M6 FF - L40	27	2	600062-0210-098	Connecting Elements D20 M6, Mounting Bracket M6
10	2	600062-0210-070	Column D20 M6 FF - L60	28	1	600062-0210-101	Part Support D20 D8 - Corner Support
11	2	600062-0210-071	Column D20 M6 FF - L100	29	2	600062-0210-102	Part Support D20 D8 - Longitudinal
12	2	600062-0210-073	Column D20 M6 MF - L20	30	2	600062-0210-103	Part Support D20 D8 - Spherical Support
13	2	600062-0210-074	Column D20 M6 MF - L40	31	2	600062-0210-105	Part Support D20 - Prism 120°large
14	2	600062-0210-075	Column D20 M6 MF - L60	32	2	600062-0210-108	Part Support D20 D8 - Cone Support
15	2	600062-0210-076	Column D20 M6 MF - L100	33	4	600062-0210-111	Bracket 20x10x100 - Cross Bore D8
16	3	600062-0210-077	Part Fastening D20 D8 - Spring Clip, standard	34	2	600062-0210-112	Part Support D20 D8 - Flat Support
17	2	600062-0210-084	Adapter Column D20 M6 - M12x1 MF - L60	35	1	600062-0210-064	OmniFix Kit M6 500x500 Toolkit
18	2	600062-0210-085	Adapter Column D20 M12x1 - M6 MF, adjustable	36	1	600062-0125-001	OmniFix Kit Lite M6 500x500 Case

\* This product is not including a gridplate(M6).

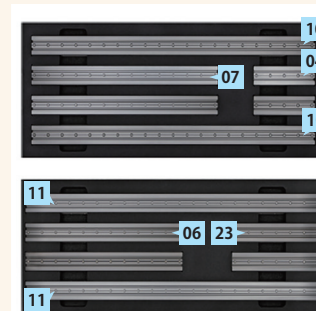
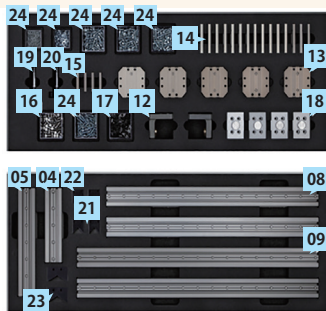
OmniFix® Kit – Jointed arm, 1000x1000 mm Model : 600062-0001-248



No	Qty	Model	Detailed	No	Qty	Model	Detailed
1	1	600062-0001-248	OmniFix Kit - Jointed Arm, 1000x1000 mm	10	1	-	Allen-Wrench AF 2mm
2	1	600062-0001-249	OmniFix Kit Jointed Arm 1000x1000 Case	11	1	-	Allen-Wrench AF 3mm
3	3	600062-0210-085	Adapter Column D20 M12x1- M6 MF, adjustable	12	1	-	Allen-Wrench AF 4mm
4	3	600062-0210-089	Adapter Column D20 M12x1- D8 MF, adjustable	13	1	-	Allen-Wrench AF 5mm
5	1	600062-0210-101	Part Support D20 D8 - Corner Support	14	3	600062-0322-001	Jointed Arm Unit D50 with Gridplate 100,
6	2	600062-0210-102	Part Support D20 D8 - Longitudinal	15	12	600062-0001-174	Jointed Arm Adapter M6, for Griplate 100
7	3	600062-0001-245	Part Fastening D20 M6 - Flat Magnet	16	12	-	Socket Head Screw M12x50 DIN 912 8.8
8	1	-	オープンエンドレンチ AF 10mm	17	12	-	Washer 13 mm DIN 125 A
9	1	-	オープンエンドレンチ AF 19mm				

# OmniFix® Kit Kit for large parts

OmniFix® Kit – Profile, 1800x600 mm Model : 600062-0001-260

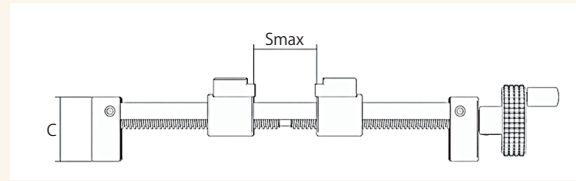
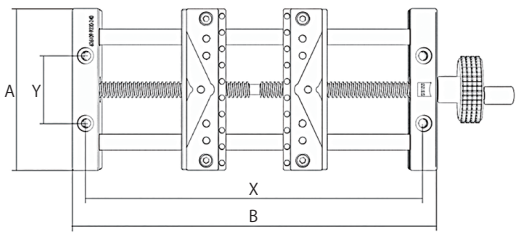


No	Qty	Model	Detailed	No	Qty	Model	Detailed
1	1	600062-0001-260	OmniFix Kit - Profile, 1800x600 mm	14	15	600062-0000-171	Adapter plate, 60 mm
2	1	600062-0001-258	OmniFix Kit - M6, 500x500 mm, without gridplate	15	4	600062-0000-172	Flange plate, 60 mm
3	1	600062-0351-049	OmniFix Kit M6 - 1800x600 mm - Profile Set	16	50	600062-0000-137	Positioning bushing D9
4	3	600062-0000-185	Bar, profile 60x60 L=220 mm	17	100	600062-0000-162	T-nut R M6
5	3	600062-0000-164	Bar, profile 60x60 L=320 mm	18	4	600062-0000-175	Foot plate 60-80
6	2	600062-0000-165	Bar, profile 60x60 L=570 mm	19	1	600062-0000-176	Fixing bolt HA D16 M12 green
7	2	600062-0000-166	Bar, profile 60x60 L=670 mm	20	1	600062-0000-177	Fixing bolt NA D16 M12 red
8	2	600062-0000-167	Bar, profile 60x60 L=720 mm	21	2	600062-0000-178	V-block 90° POM
9	2	600062-0000-186	Bar, profile 60x60 L=820 mm	22	2	600062-0000-179	V-block 60° POM
10	2	600062-0000-168	Bar, profile 60x60 L=1020 mm	23	2	600062-0000-180	V-block 120° POM
11	2	600062-0000-187	Bar, profile 60x60 L=1070 mm	24	1	600062-0000-181	OmniFix Kit M6 1800x600 Toolkit
12	2	600062-0000-169	Positioning bracket	25	1	600062-0000-184	OmniFix Kit M6 1800x600 Case
13	5	600062-0000-170	Cross adapter plate				

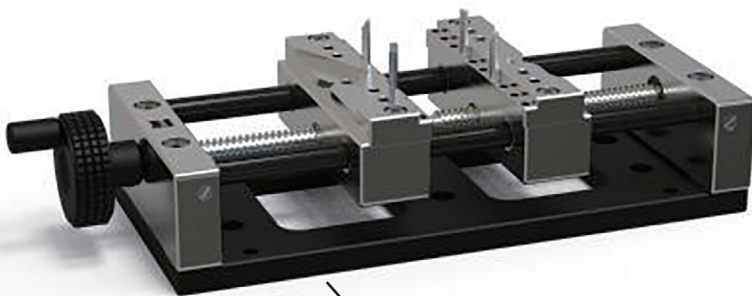
## Gridplates Gridplates for OmniFix®

Model	Width (mm)	Depth (mm)	Height (mm)	Detailed
600062-0111-000	500	400	20	•Grid: M6, 50×50 mm pitch
600062-0112-000	250	250	20	•Grid: M6, 50×50 mm pitch
600062-0113-000	400	300	20	•Grid: M6, 50×50 mm pitch
600062-0114-000	400	600	20	•Grid: M6, 50×50 mm pitch
600062-0115-000	600	800	25	•Grid: M6, 50×50 mm pitch
600062-0116-000	700	800	25	•Grid: M6, 50×50 mm pitch
600062-0117-000	500	500	20	•Grid: M6, 50×50 mm pitch •For ZEISS DuraMax® series
600062-0111-001	400	600	20	•Grid: M6, 50×50 mm pitch •For XYZAX series, pitch of holes for connecting with CMM table is 150 mm
600062-0111-002	600	800	25	•Grid: M6, 50×50 mm pitch •For XYZAX series, pitch of holes for connecting with CMM table is 200 mm

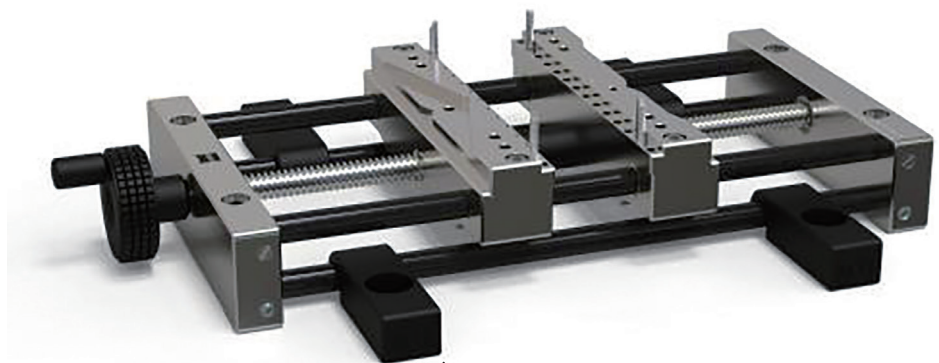
OmniFix® Vises



Model	A (mm)	B (mm)	C (mm)	X (mm)	Y (mm)	Smax (mm)	Remarks
626109-9220-210	80	160	45	150	-	50	•Including M6 threads
626109-9220-220	80	210	45	200	-	100	•Including M6 threads
626109-9220-230	120	220	45	200	50	110	•Including M6 threads
626109-9220-240	120	270	45	250	50	160	•Including M6 threads
626109-9220-245	120	270	45	250	50	160	•Including M6 threads •Including M10/M12 threads and a mounting plate for connecting with M10/M12 thread holes
626109-9220-250	120	320	45	300	50	210	•Including M6 threads •Black anodized for fewer reflections during image measurement
626109-9220-260	120	370	45	350	50	260	•Including M6 threads
626109-9220-270	170	320	45	300	100	210	•Including M6 threads •Including M10/M12 threads and brackets for connecting with M10/M12 thread holes
626109-9220-280	170	420	45	400	100	310	•Including M6 threads •Including M10/M12 threads and brackets for connecting with M10/M12 thread holes
626109-9220-290	170	520	45	500	100	410	•Including M6 threads •Including M10/M12 threads and brackets for connecting with M10/M12 thread holes



Mounting plate for connecting with table of CMM



Mounting brackets for connecting with table of CMM

# FixAssist®



FixAssist® VAST

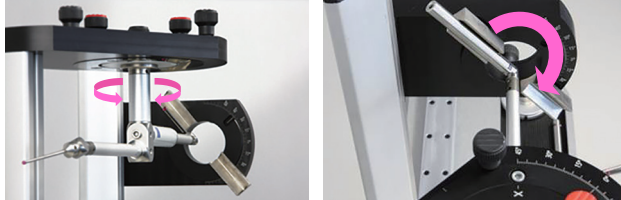


FixAssist® XTR

## FixAssist® VAST/FixAssist® XTR

FixAssist® VAST and FixAssist® XTR are jigs for the assembly of stylus systems. FixAssist® VAST is used for VAST gold/XT gold and FixAssist® XTR is for VAST XTR gold.

By using these jigs, it is possible to accurately determine the horizontal angle of Z axis and the angles of the cube adaptor and the angle block attached to the lateral extension to build the stylus system.



詳細	型式	Description
FixAssist® VAST® linear	626109-9120-100	FixAssist® VAST® linear, incl. tool kit
FixAssist® XTR	626109-9160-100	FixAssist® XTR linear, incl. tool kit

## FixAssist® XXT



FixAssist® XXT

FixAssist® XXT is a jig for the assembly of the stylus system for VAST XXT. By using this jig, it is possible to accurately adjust the angles of the star-shaped cube and the star-shaped stylus attached to the tip of the extension as well as the knuckle joint and the angle piece to build a complicated stylus system.

Details	External View	Model	Description
FixAssist® XXT		626109-9140-200	FixAssist XXT, including adapter set and tooling set
FixAssist® XXT Adaptersets		626109-9140-300	FixAssist XXT adapter set for knuckle joints
FixAssist® XXT Adapter S1		626109-9140-160	Adapter S1 for clamped star styli
FixAssist® XXT Adapter W1		626109-9140-190	Adapter W1 for angle pieces < 25°
FixAssist® XXT Adapter K2		626109-9140-140	Adapter K2 for knuckle joints. Adapter K2 together with adapter K1 and alignment pin are used to adjust the angle of knuckle joints (626103-6180-021).
FixAssist® XXT Adapter K1		626109-9140-110	Adapter K1 for knuckle joints. Adapter K1 together with adapter K2 and alignment pin are used to adjust the angle of knuckle joints (626103-6180-021).
FixAssist® XXT Alignment pin		626109-9140-120	Alignment pin. Alignment pins are screwed into cubes, angle pieces and knuckle joints and used to adjust the different angles by aligning into a notch.

### Example of available VAST XXT accessories for FixAssist® XXT

Details	External View	Model	L	ML	DG	LE	DGE	system	weight (g)	Description
Knuckle joint M3 XXT, rotary		626103-6180-021	12		5				1	without rotaty joint receiver
Angle block M3 XXT with cone adaptor		626103-6020-015	7.75	4	5			cone adaptor	0.82	angle 15°
Angle block M3 XXT with cone adaptor		626103-6020-025	7.75	4	5			cone adaptor	0.82	angle 25°

• Please contact us for details of available VAST XXT accessories.